

# Instructions for Installing Lining Kits in Saddle Bags

Remove Bags, Clean Interior, Read all Instructions then begin installing lining.



Remove Lid, leave hinge attached to lid.



Remove rubber grommets. Leave bracket attached.



See seams in lining. Smooth out seams with your thumb. They will disappear when finished installing lining.



Position Lining in Bag and reinstall grommets. These act as locator pins to position lining into place.



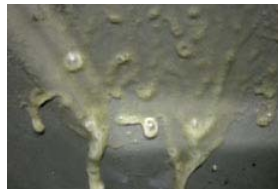
With grommets in place you can now locate lining into position: side to side and back to front.



Pull the lining out so you can now spray adhesive.



Before spraying, mask the lip of the box for overspray. Spray adhesive on the floor, one end and one side.



Spray Liberally. This lets you slide around lining into place.



Smooth out the wrinkles on the 3 sides you have sprayed. Remove grommets and spray remaining sides with adhesive, then smooth out wrinkles.



Place Lining into Lid interior to see how it fits.



Notice the difference in the lids. The lid on the left is the earlier model and on the right, the later model. Make sure you have the correct kit.



Mask the seal, then spray the surface liberally so the lining slides with ease into place.



Push seams together and smoother out with thumb.



Allow bags and lids 1/2 hour to completely dry. They are now ready to reinstall hinge and put back on your bike.