

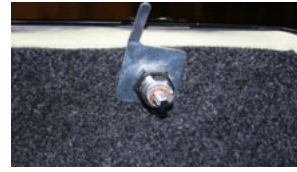
Instructions for installing Sumax Luxurious Lining Kits for Tour Packs & Lids.
 Remove Tour Pack from bike. You can leave the lid on if you support the lid some how.



1. Remove wire stay and lock in the lid. Clean inside surfaces.



2. Flip over the liner and smooth out the seams.



3. Replace lock into hole as this will act to locate liner into position.



4. Mask around gasket seal to prevent adhesive over spray. Pull back liner and spray adhesive liberally... lots. It lets the lining slide around easily into place.



5. Push lid liner into position working your way around the lid. Spray one panel at a time.



6. Now spray the last side panel after removing the lock. Once completed reinstall lock into place.



7. After smoothing out the seams in the box liner, locate the lighting cord, run it through the hole and mask it.



8. Lay out the liner lining up the black latch. This will act as your locator in the box.



9. Start with this side panel. Spray adhesive liberally and push liner into place. Work out wrinkles with your hand.



10. Once this panel is in place, fold back lining to expose the box.



11. Spray & work your way around the box pushing lining into place.



12. Check your edges for loose lining. Add adhesive where required.

Routine cleaning may be done with a damp cloth. Stains may be removed with a rug cleaner.
 #8794 2001-2007 Tour Pack FLHT, FLHTC Charcoal #8795 2001-02007 Tour Pack FLHT, FLHTC Silver
 #8796 Lid only all tour models all years Charcoal #8797 Lid only all tour models all years Silver. 100% made USA
 Sumax, 122 Clear Road, Oriskany, N.Y. 13424 U.S.A. Ph# 315-768-1058 www.sumax.com